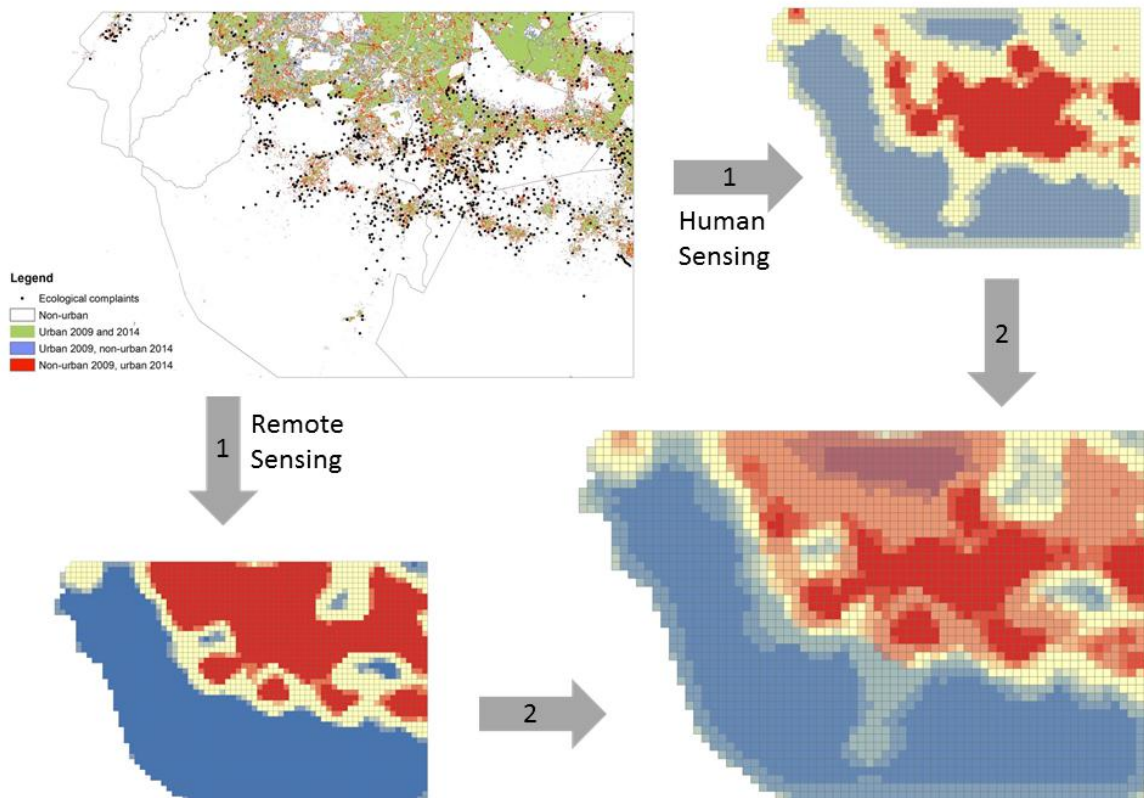


Press release

Accurate mapping of megacity illegal growth – a promising method



The study combines data from remote und human sensing

top left: Map of the South of Mexico City, black dots indicating citizen complaints to the environmental protection agency, red dots show new urbanization

top right: Analysis of human sensing data (complaints about illegal settlements)

below left: Analysis of remote sensing data (urbanization)

below right: Data combined, far red = 99 percent probability for a hotspot of illegal settlement; light red = superior evidence for urbanization; blue = little/no evidence for urbanization; white = not significant, human sensing provides prognostic potential

<http://dx.doi.org/10.1016/j.apgeog.2016.12.001>

©UHH/CEN/Rodriguez, Heider