

KlimaCampus Hamburg

Center for Climate Research
in Hamburg



Integrated Climate System Analysis and Prediction Cluster of Excellence, 2007



Universität Hamburg

Meteorology,
Oceanography,
Geophysics,

...

Sociology,
Economy,
Peace Research,
Journalism,

...



Max-Planck-Institut
für Meteorologie



Inst. for Coastal Research

Climate Research in Hamburg



Universität Hamburg



KlimaCampus

Meteorology,
Oceanography,
Geophysics,

...

Sociology,
Economy,
Peace Research,
Journalism,

...



Max-Planck-Institut
für Meteorologie

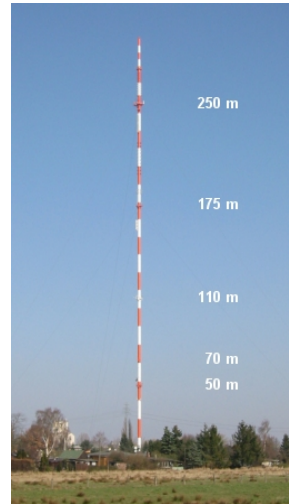


Inst. for Coastal Research



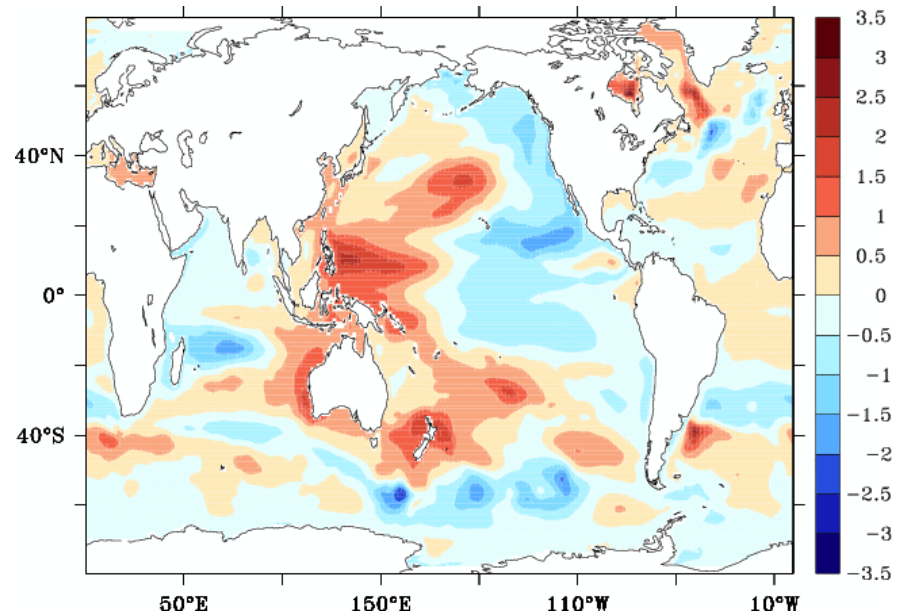
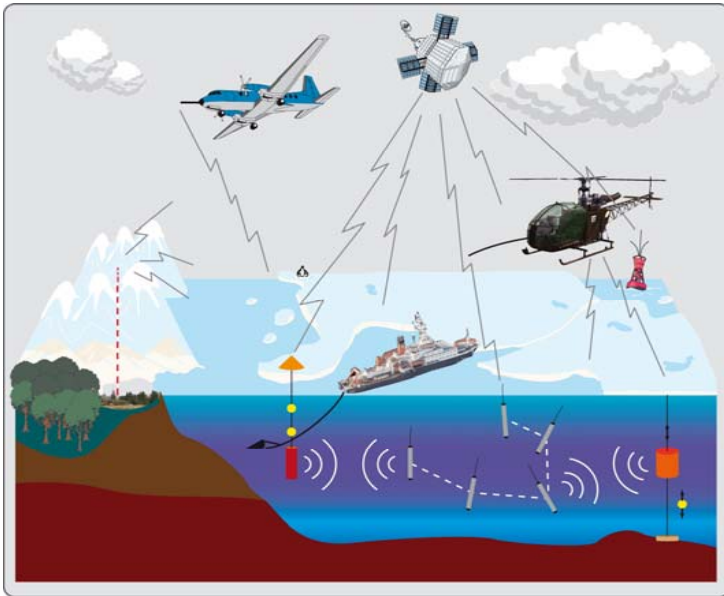
Infrastructure for Climate Research

- Research Platforms



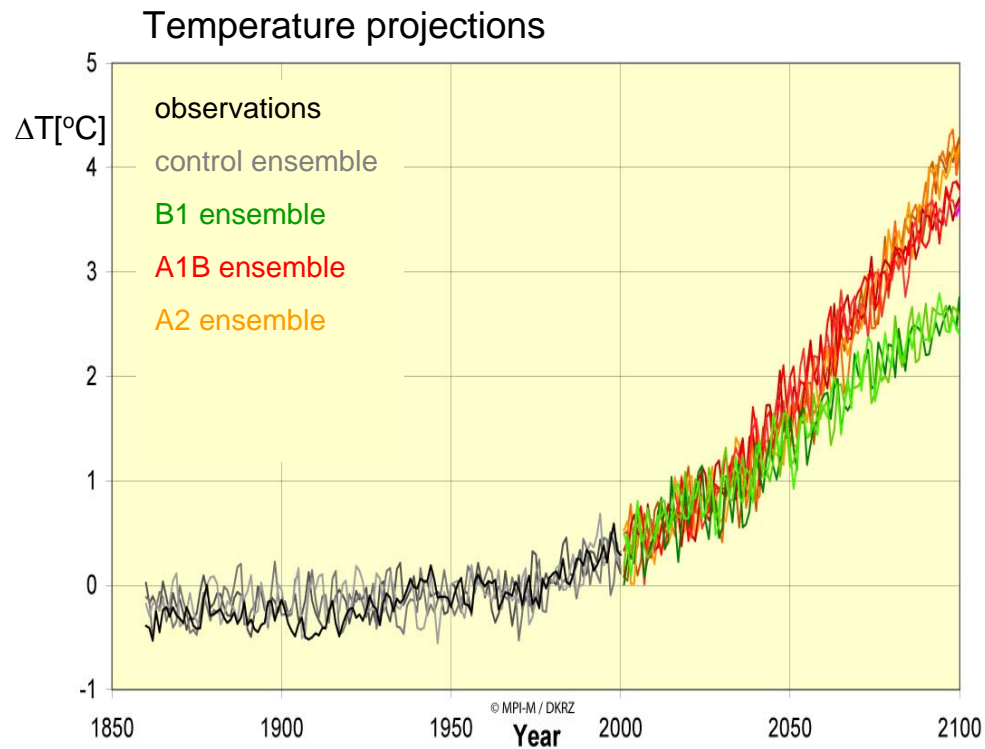
- What is the past and present state of climate?

Climate system data base,



Regional anomalies of sea-level change 1993 - 2001

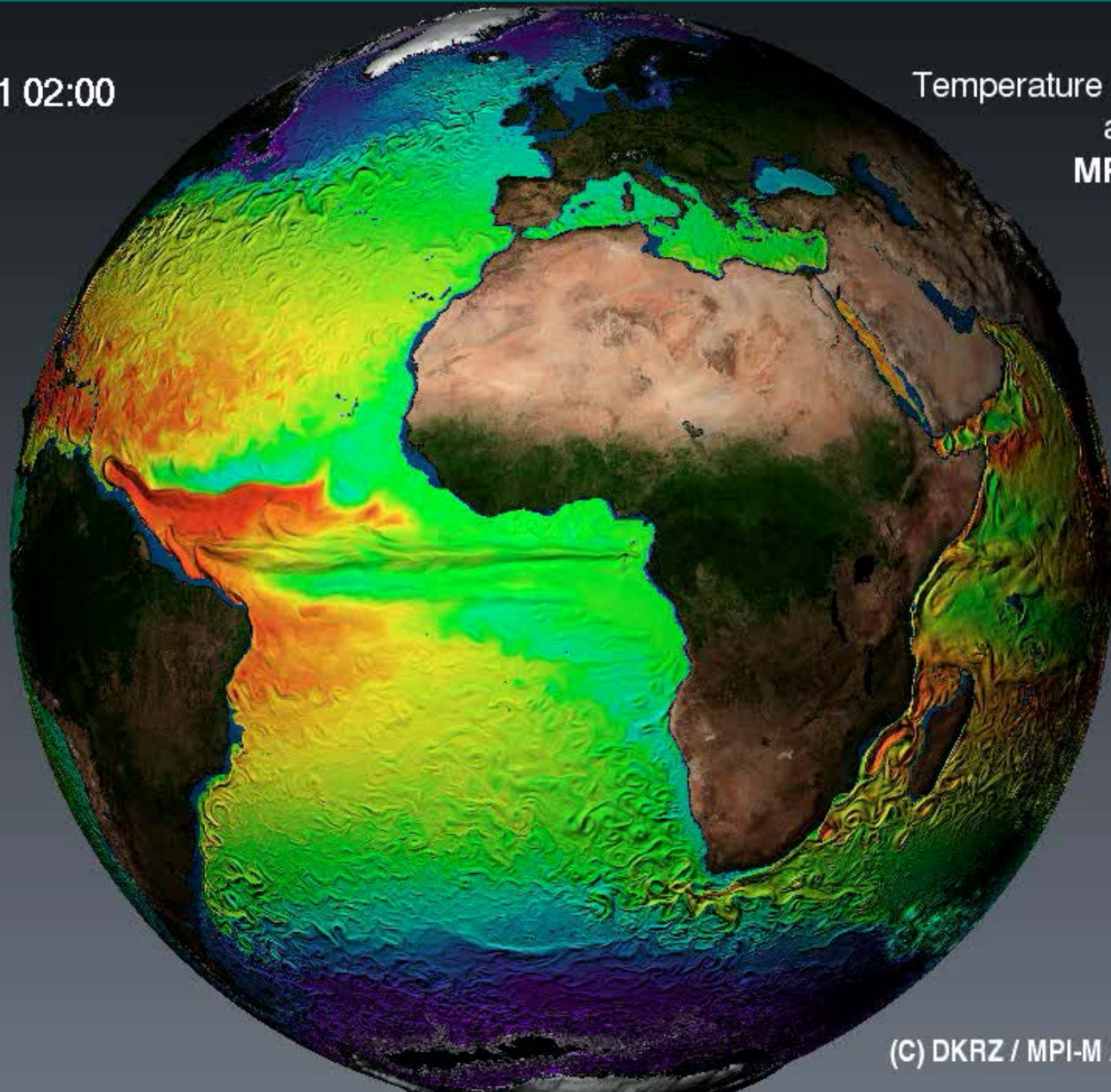
- What are the predictable elements of climate?



Research at KlimaCampus Hamburg

01/01/0031 02:00

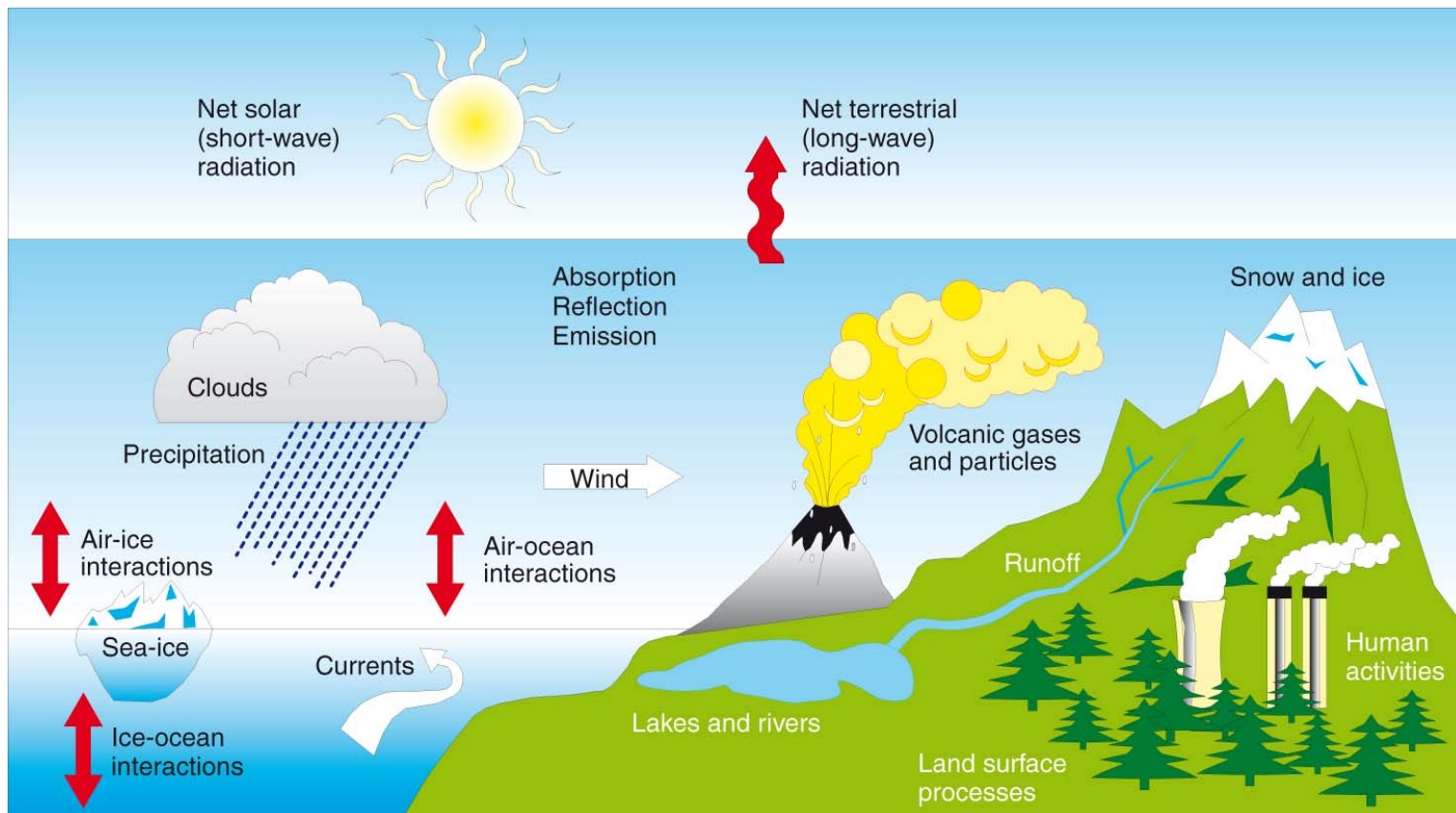
Temperature and Velocity
at 75m depth
MPI-OM TP6M



(C) DKRZ / MPI-M / KlimaCampus

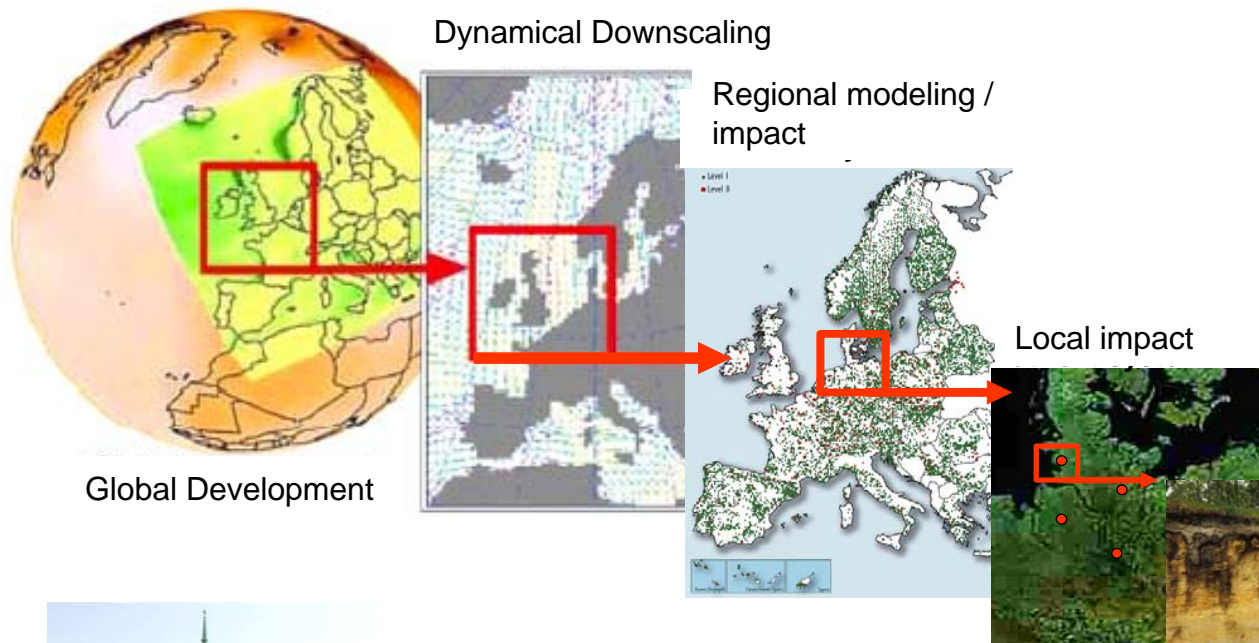
Research at KlimaCampus Hamburg

- What are the key feedbacks within the climate system and between humans and the climate?



Research at KlimaCampus Hamburg

- What are the regional impacts of global climate change?



Climate Change
Assessment Report
for the
Metropolitan Region Hamburg



Graduate Education at the KlimaCampus

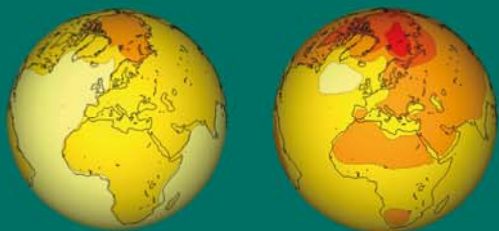
SICSS

School of Integrated Climate System Sciences

MSc program

Integrated Climate System
Sciences

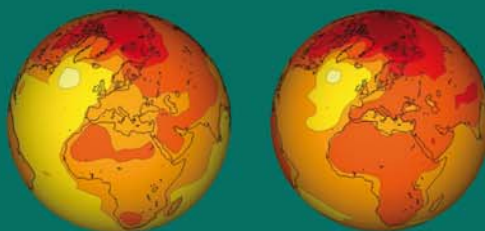
2 years



Doctoral program

Integrated Climate System
Sciences

3 years



IMPRS-ESM

International Max Planck Research
School on Earth System Modelling

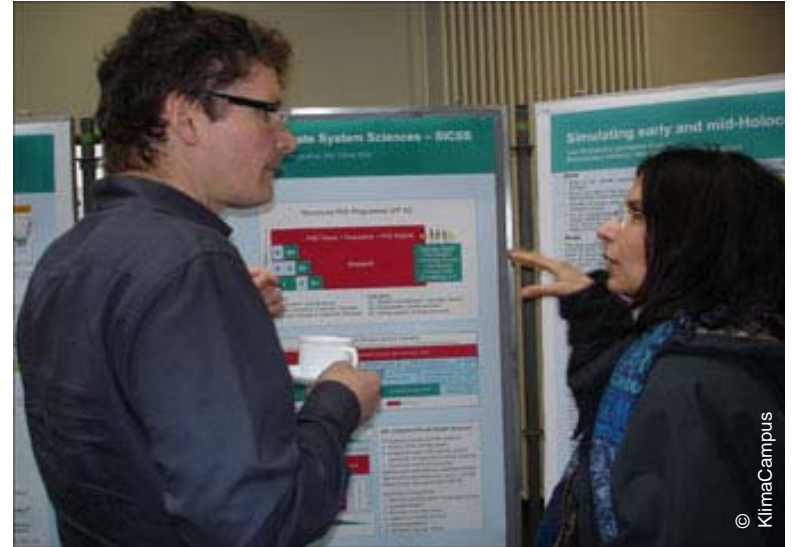
Doctoral program

Earth System Modelling

3 years



Dialogue and Discourse with the Public



- sharing the fascination of climate science
- stake holder discourse



KlimaCampus Hamburg Centre for Climate Research in Hamburg

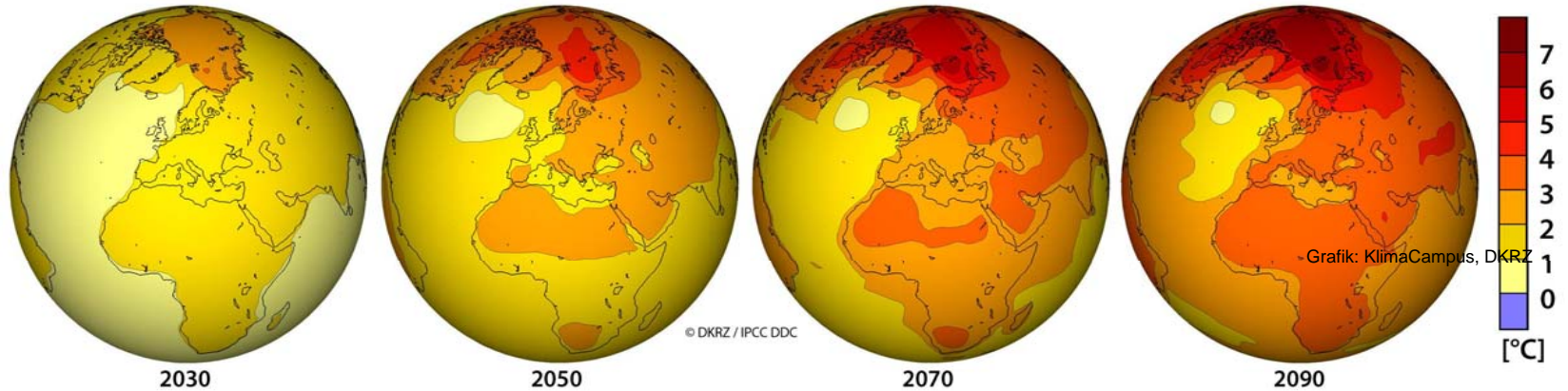


© KlimaCampus



KlimaCampus

Rationale

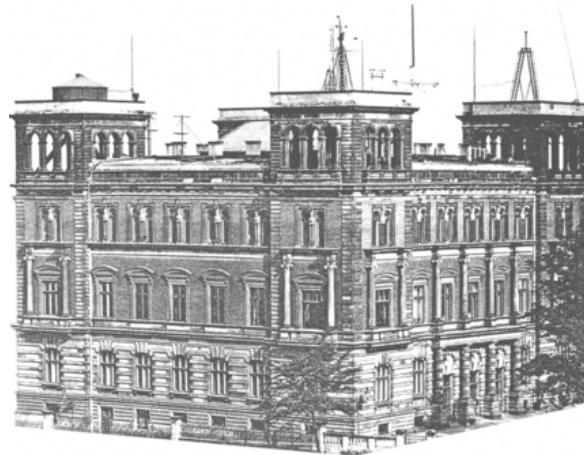


- **Global Warming** during the last decades is very likely caused by humans will very likely continue and accelerate, if greenhouse gas emissions continue to increase.

Historic Roots of Climate Research in Hamburg

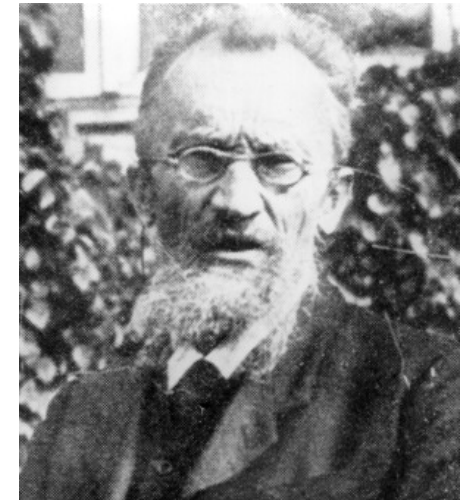


Georg von Neumayer



www.wissenschaft.hamburg.de

*Seewarte Hamburg
(Naval Observatory)*



Wladimir Köppen